

CALCULATING SQUARE FOOTAGE: BASIC ROOM

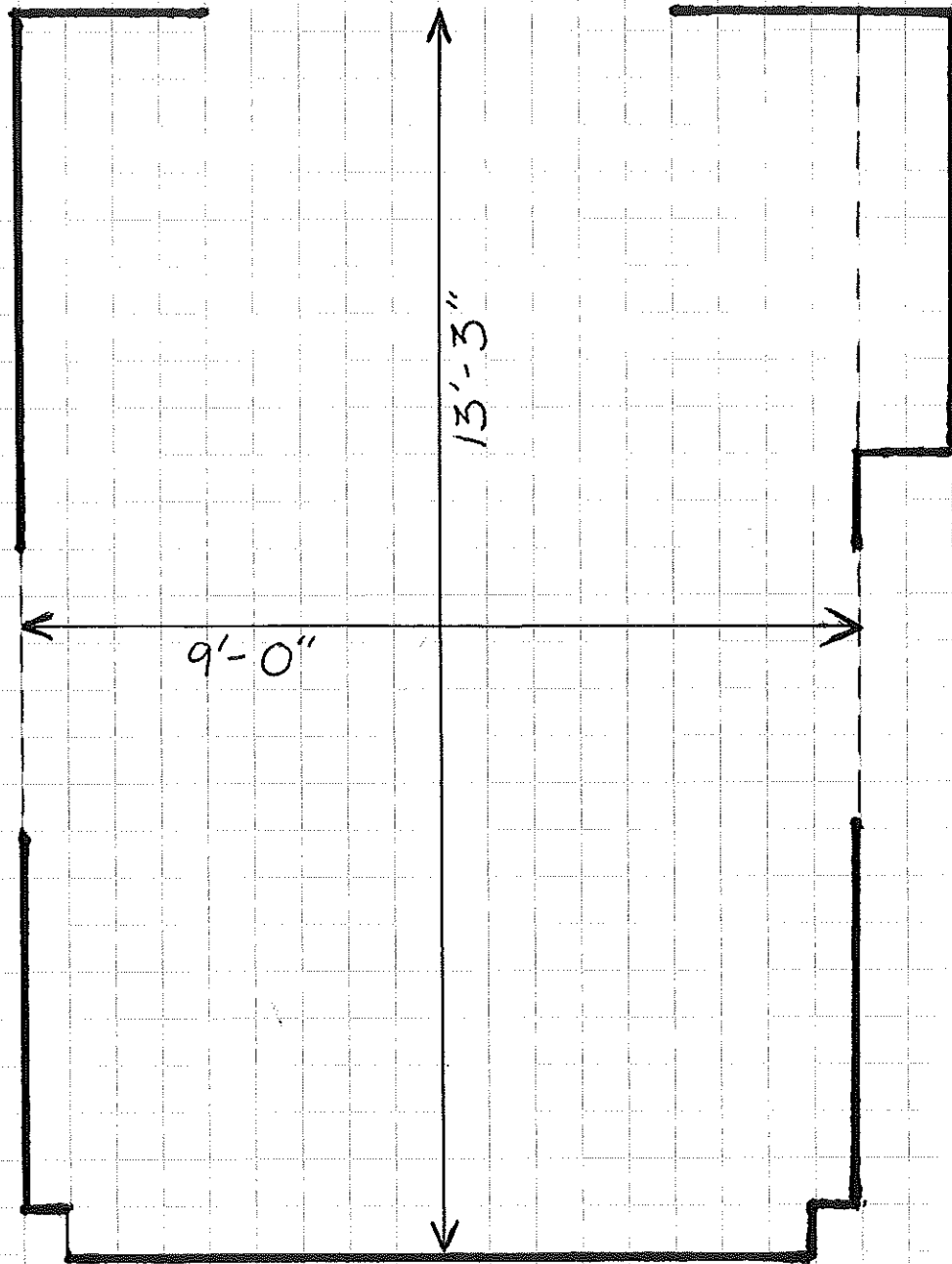
EXAMPLE A

$$\begin{aligned} \text{LENGTH} &= \\ &13'-3'' \\ &\text{OR} \\ &159'' \end{aligned}$$

$$\begin{aligned} \text{WIDTH} &= \\ &9'-0'' \\ &\text{OR} \\ &108'' \end{aligned}$$

$$\begin{aligned} 159'' \times 108'' &= \\ 17,172 & \end{aligned}$$

$$\begin{aligned} 17,172 \div 144 &= \\ 120 \text{ sq. ft.} & * \end{aligned}$$



MEASURE LENGTH + WIDTH OF THE ROOM.
AFTER CONVERTING MEASUREMENTS INTO INCHES,
MULTIPLY THE LENGTH BY THE WIDTH TO COME UP
WITH SQUARE INCHES, THEN DIVIDE BY 144
TO GET THE SQUARE FOOTAGE. *ROUND UP TO THE
NEAREST SQ. FT., IF NEEDED.

IF USING GRID PAPER: 2 SQUARES = 1 FOOT
WHICH IS ALSO SCALED: $\frac{1}{2}'' = 1 \text{ FOOT}$

CALCULATING SQUARE FOOTAGE: COMPLEX ROOM

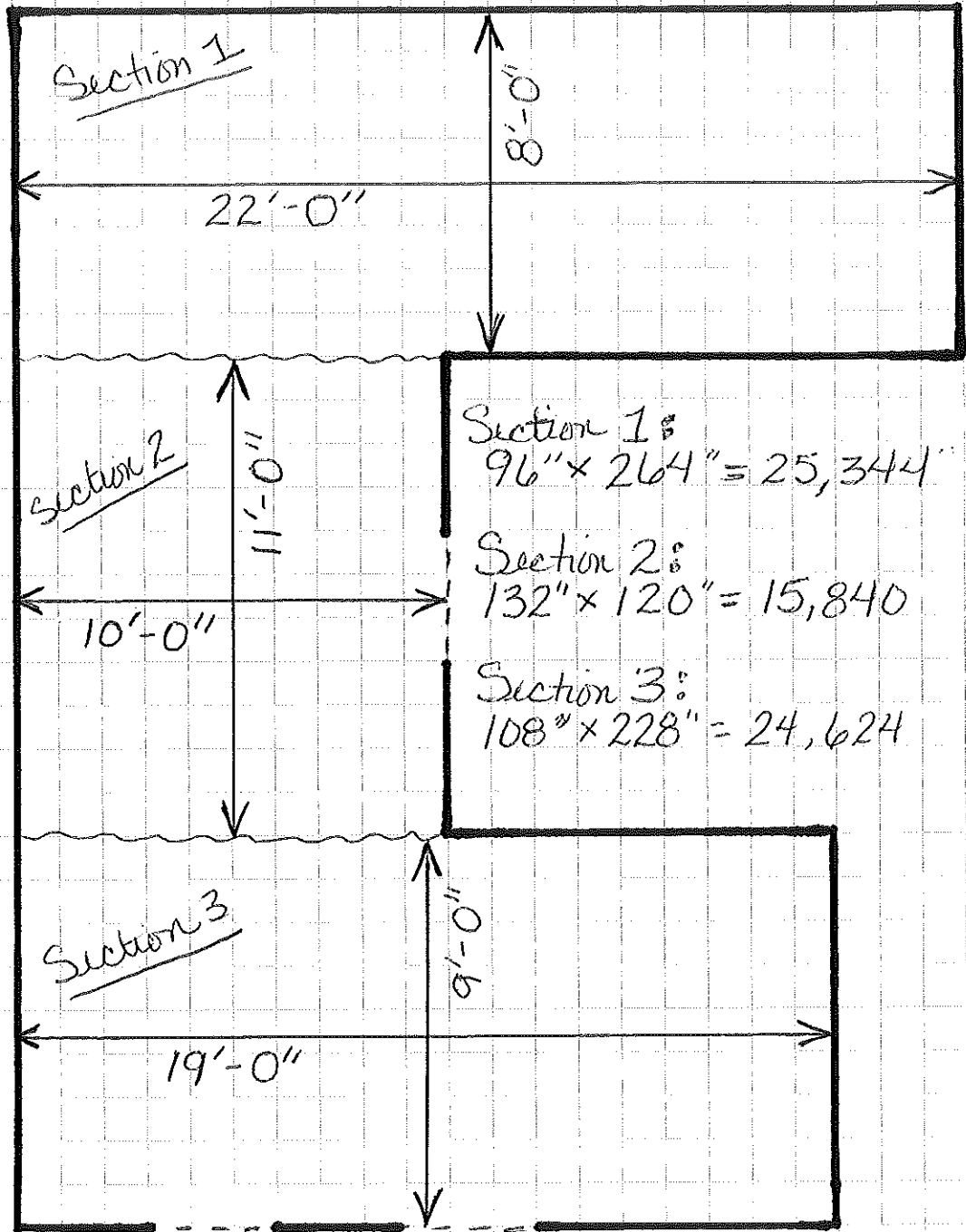
EXAMPLE B

COMBINED:
25,344
15,840
+ 24,624

65,808

\div 144

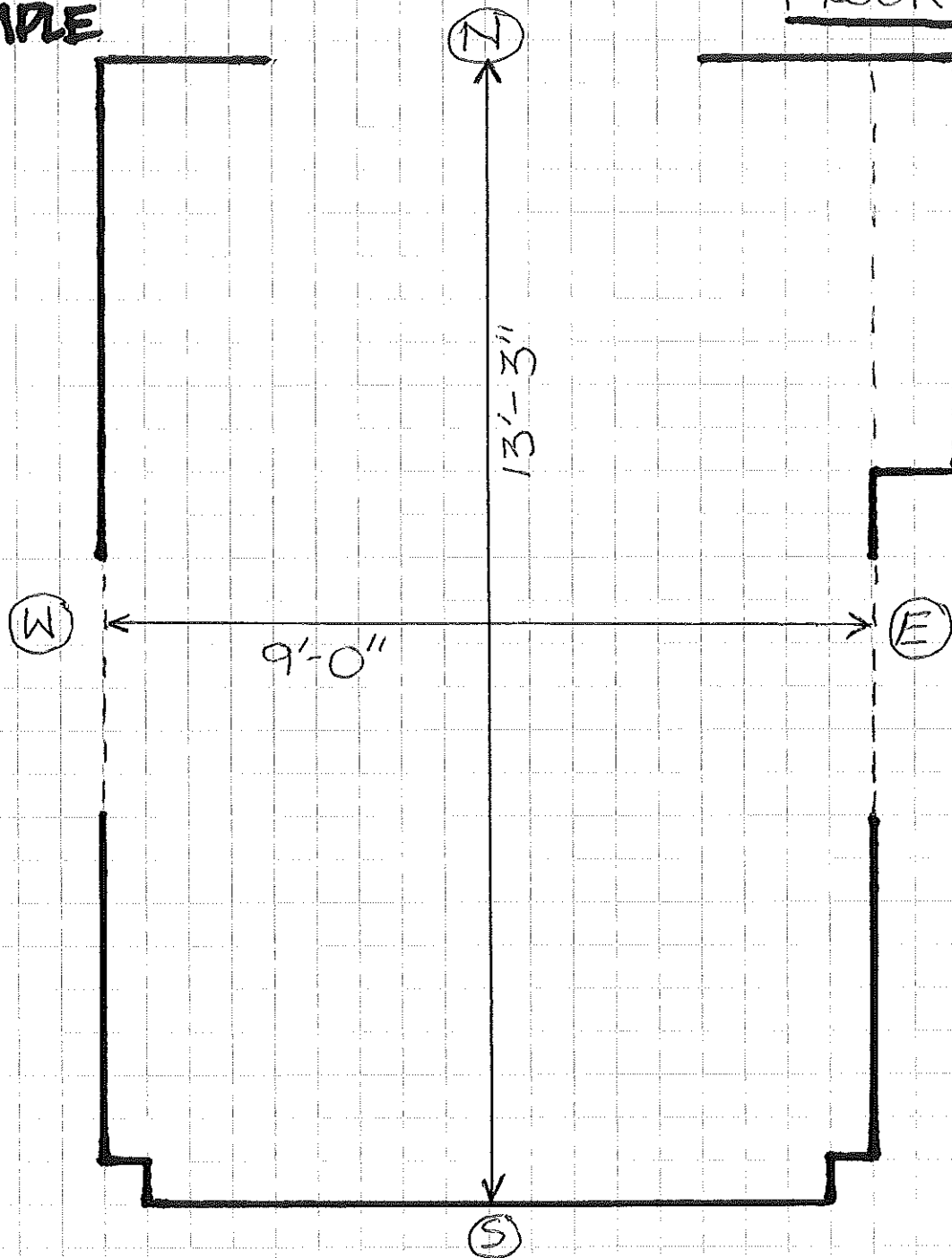
457
SQ. FT.



DIVIDE THE ROOM INTO SECTIONS OF SIMPLE SQUARES OR RECTANGLES. CALCULATE EACH SECTION SEPARATELY (LIKE IN "EXAMPLE A" INSTRUCTIONS) AND THEN ADD THEM TOGETHER, DIVIDE BY 144 TO GET THE SQUARE FOOTAGE. ROUND UP TO THE NEAREST SQ. FT., IF NEEDED.

HOW TO MEASURE YOUR ROOM - FLOORPLAN

EXAMPLE
C



DRAW AN OUTLINE OF YOUR FLOORPLAN + LABEL EACH WALL (IDEALLY NORTH, SOUTH, EAST, WEST) FOR IDENTIFICATION PURPOSES. MEASURE THE WIDTH + LENGTH OF THE ROOM + INDICATE THEM ON YOUR FLOOR PLAN AS SHOWN

NOTE: OUTLINE DOES NOT HAVE TO BE PERFECT BUT THE DIMENSIONS NEED TO BE ACCURATE.

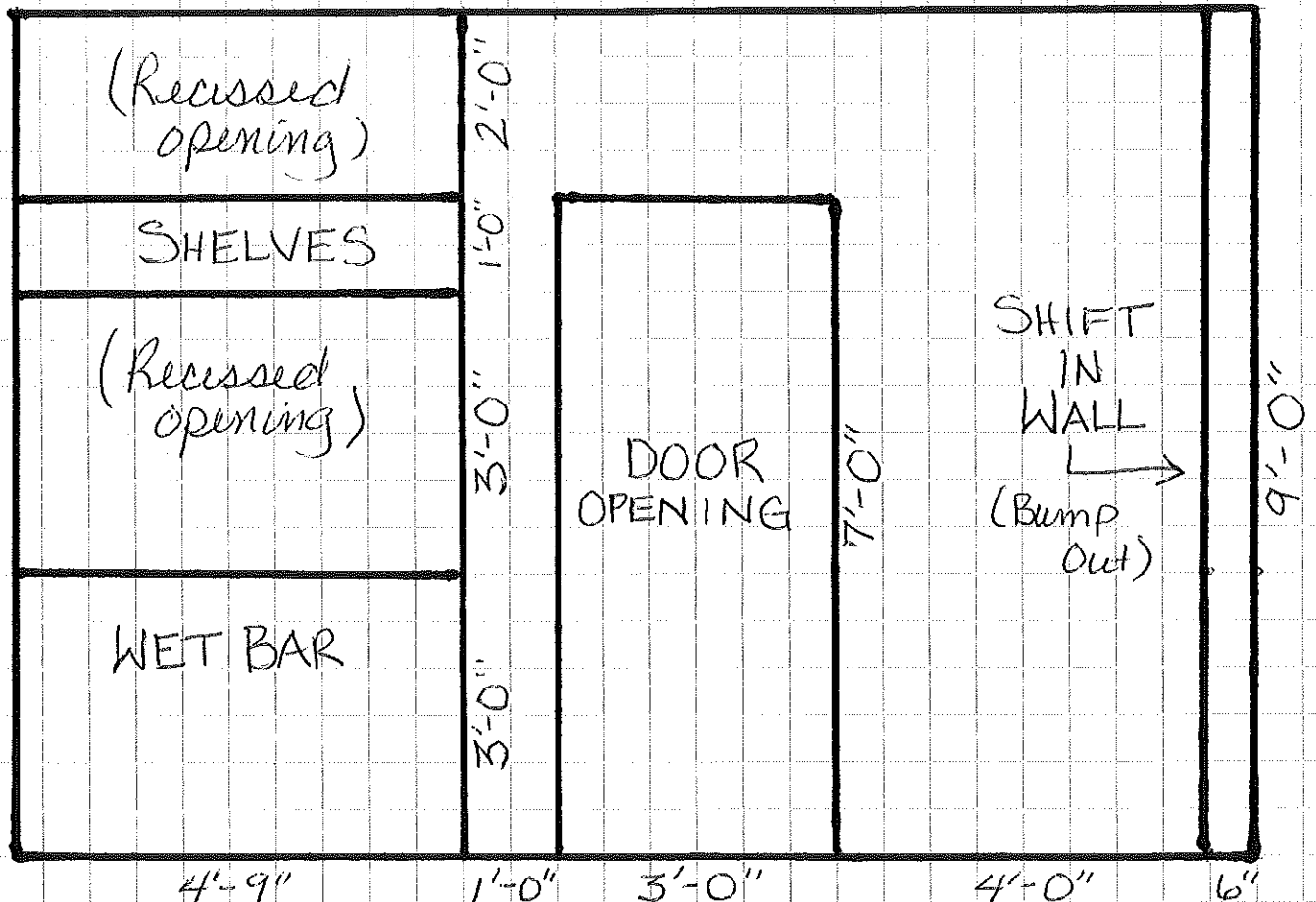
HOW TO MEASURE YOUR ROOM -

ELEVATIONS (WALL DRAWINGS)

EXAMPLE
D

STEP 1

"EAST WALL"



MEASURE WALL(S) IN FEET + INCHES. DRAW A DIAGRAM OF THE FACE OF THE WALL + INDICATE WHICH WALL IT IS (MATCH LABEL FROM FLOORPLAN IN EXAMPLE C)

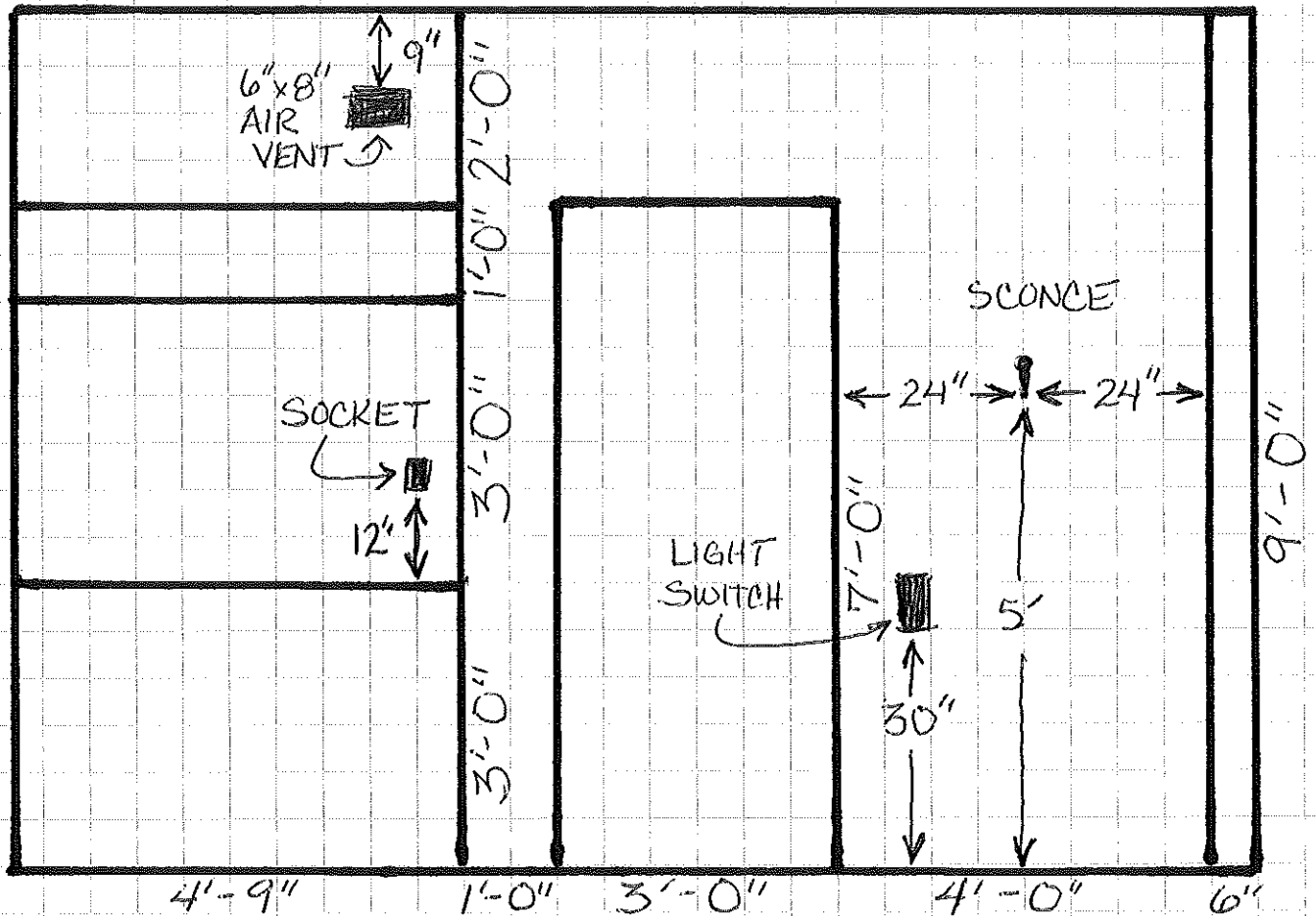
DRAW PLACEMENT OF WALLS, BUILT-INS, DOORS + WINDOWS + NOTE THE DIMENSIONS OF EACH SECTION INDICATING PLACEMENT.

HOW TO MEASURE YOUR ROOM - ELEVATIONS (WALL DRAWINGS)

STEP 2

EXAMPLE E

"EAST WALL"



ADD SOME KEY DETAILS (SOCKETS, SWITCHES, VENTS, + WAINSCOTING). INDICATE LOCATION BY MEASURING FROM THE BASE OF THE FIXTURE TO FLOOR OR OTHER CLEAR INDICATOR (SUCH AS 12" FROM COUNTER OR 9" FROM CEILING).

DONT ADD DETAILS FOR FRAMES OR MOUNDINGS. THE PHOTOS WILL CLARIFY THAT.

REPEAT STEPS FROM EXAMPLES D+E FOR EACH WALL.

